

# ELISA KIT CATALOG



# WELCOME

Proteintech sandwich ELISA kits provide a simple and elegant solution for your immunoassay needs. The procedure is straightforward and allows you to detect and quantify your target protein, reliably and accurately, in a range of biological samples in the space of a morning or afternoon. Proteintech's ELISA kits are based on the two-site sandwich immunoassay principle, in which two highly specific, non-competitive antibodies are used in the detection of a target analyte: one for capture, and one for detection.

Each Proteintech sandwich ELISA kit has been rigorously assessed for intra- and inter-assay variability and data show high levels of assay consistency and sample recovery (provided with every datasheet). The development of a typical Proteintech sandwich ELISA kit is reviewed in the next section. Briefly, steps involved in making Proteintech's sandwich ELISA kits include:

- Careful selection of antibody pairs to ensure optimum signal
- Calibration with NIBSC/WHO Standards
- Testing with multiple sample types, e.g., sera, plasma, cell culture supernatant
- Testing of intra- and inter-assay precision
- Linearity testing
- Recovery testing
- Kit stability testing

## Product List

### CD Molecular

ELISA Kit	Page	ELISA Kit	Page	ELISA Kit	Page
CD31	6	CEACAM5	6	PD-L1	7
CD3E	6	PD1	7		

### Cytokines

ELISA Kit	Page	ELISA Kit	Page	ELISA Kit	Page
Adiponectin	7	GKN1	10	MMP-13	13
BIRC5	8	GMFB	10	NCALD	13
CCL4	8	IFNA1	11	SERPINA3	13
CHGA	8	IFN-gamma	11	TGF-beta1	14
F12	9	IL 1-beta	11	TGF-beta1	14
FGF12	9	IL2	12	TLE3	14
FN1	9	MCP-1	12	TNF-alpha	15
GM-CSF	10	MMP-2	12		

### Interleukin

ELISA Kit	Page	ELISA Kit	Page	ELISA Kit	Page
IL2	15	IL8	19	IL13	20
IL4	18	IL10	19	IL17A	20
IL5	18	IL12 p40	19	IL28A	21
IL6	18	IL12 p70	20	PRE-IL18	21

### Membrane Protein

ELISA Kit	Page	ELISA Kit	Page	ELISA Kit	Page
ABCD1	21	CD71	23	MHC Class I	24
ADAM12	22	CNPY2	23	NINJ2	24
APOL1	22	CYCS	23	TNF-alpha	25
CD13	22	HSPD1	24		

### Other

ELISA Kit	Page	ELISA Kit	Page	ELISA Kit	Page
Albumin	25	HSP70	27	Mamma-globinA	28
APOD	25	HSP90	27	P21	28
CYB5R3	26	IDH1	27	SMN2	29
FKBP1	26	JNK	28	TDP-43	29
HDAC1	26				

# WHAT GOES INTO MANUFACTURING A PROTEINTECH ELISA KIT?

## Antibody Selection

The antibody selection procedure identifies the best detection and capture antibodies for pairing together in a sandwich ELISA immunoassay. The ideal capture antibody must possess high sensitivity and affinity toward the target antigen to perform its function in an ELISA experiment. For this reason, polyclonal antibodies, raised against large segments or all of the target protein, are first explored in the selection process\*. A high antibody titer in an indirect ELISA experiment identifies the most suitable candidate.

Suitable detection antibodies must be tested for their specificity and, most importantly, compatibility with a capture antibody. Because of their high specificity, consistency, and reproducibility, monoclonal antibodies are utilized for the detection stage of a sandwich ELISA experiment. On average, 10 monoclonal subclones are assessed in the antibody selection process. Antibodies from each subclone are evaluated for compatibility with the capture antibody. The best detection antibody gives a strong and reliable signal that is consistent across multiple rounds of testing and dilutions of the protein target. Its signal should not be affected by antigen binding to the capture antibody, i.e., their binding sites should not compete or overlap.

The majority of our antibodies are raised against whole-protein immunogens, which means expressing a large section of the target protein, or even all of it where possible, and introducing this to the host immune system as the antigen. Our standard 102-day-long immunisation protocol paired with whole-protein antigens allows several things to happen in the host immune system that contribute to superior antibodies:

- **Selection of sites with greater immunogenicity by major histocompatibility complex (MHC) class II molecules.**
- **Affinity maturation in peripheral lymphatic tissues.**
- **Mounting of a secondary immune response that produces antibodies with greater recognition capabilities.**

## Calibration

Our protein standards are calibrated using World Health Organization (WHO) Expert Committee on Biological Standardization (ECBS)-approved standards, sourced from The National Institute for Biological Standards and Control (NIBSC).

The Proteintech lab also measures the coefficient of variation of its kits against the equivalent NIBSC standard to test the inter-assay variability from one use to the next (typically, several experiments will be carried out over a few days to assess inter-assay variability). Intra-assay variation is also tested, i.e., variability between duplicates, and is done for every separate batch of each individual ELISA kit made.

## Rigorous Testing

All Proteintech ELISA kits are assessed for their recovery, linearity, range, sensitivity, and stability indices.

***"On average, 10 monoclonal subclones are assessed in the antibody selection process. Antibodies from each subclone are evaluated for compatibility with the capture antibody."***

***“The dynamic range, i.e., the upper and lower detection limits, of each kit is assessed using a series of dilutions over several replicates.”***

## Recovery

The recovery index is a measure of how an assay is affected by the sample medium being used, e.g., serum or plasma. A known amount of a protein standard, usually a fusion protein of the target, is combined with the experimental medium and subjected to the sandwich ELISA procedure. This procedure is known as “spike recovery.”

The lab performs spike recovery experiments with three concentrations considered: “Low,” “medium,” and “high” (e.g., low = 50 pg, medium = 500 pg, and high = 2000 pg). Each is done several times with different sample types: serum, urine, plasma, cell culture supernatant. The output of each spike is then measured against a standard prepared in sample diluent. The ratio of sample output to diluent control output is expressed as a percentage, referred to as the recovery index. A recovery index of 80-120% is considered desirable.

## Linearity and Range

The linearity index of an ELISA kit indicates the precision of assay results for samples tested at different levels of dilution in the chosen sample diluent. Where a sample medium already contains the endogenous target, the Proteintech lab tests linearity directly (by performing series dilutions of the medium). If a medium carrying endogenous sample cannot be obtained, a similar procedure to spike recovery is performed (i.e., a known amount of protein is added to a sample before dilution is performed). Typically, linearity is measured over serial 2-fold dilutions.

The dynamic range, i.e., the upper and lower detection limits, of each kit is assessed using a series of dilutions over several replicates. Providing this data helps kit users to optimize their dilution range when designing or revising their assays.

## Sensitivity

Sensitivity assays are carried out on each prototype ELISA kit to assess baseline signal, i.e., the threshold of minimum detection. If your sample data is higher than the sensitivity readout, the sample may be considered positive; if lower than the sensitivity readout, the sample is negative and the data should be discarded.

Sensitivity is determined by performing the ELISA procedure with multiple negative samples. The OD readouts of each negative sample are averaged out and the standard deviation calculated. Sensitivity is then calculated using the formula:

$$\text{Average} + (\text{STDEV} \times 2) = \text{XOD}$$

XOD is then read from the standard curve of the linearity experiment.

## Stability

Proteintech tests all its ELISA kits following reagent incubation at 37°C after both three and five days. It also tests them after 45 days' storage at 4°C. Only those kits with no loss of performance are approved for sale.

---

*\*It may not always be the case that a polyclonal antibody is the best for protein capture, and this is also taken into consideration during kit design.*

---

## CD31

**Catalog Number**  
**KE00041**

**Category:**  
CD Molecular

**Samples tested:**  
Serum, plasma

**Tests:**  
1 X 96 well plate

**Sensitivity:**  
0.09 ng/mL

**Range:**  
0.25–16 ng/mL

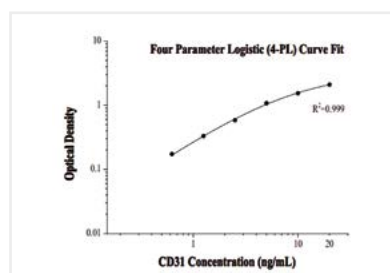
**Reactivity:**  
Human

**Entrez GeneID:**  
5175

### Recovery:

Sample Type	Average	Range
Plasma	96%	87%–102%

### Standard Curve



## CD3E

**Catalog Number**  
**KE00026**

**Category:**  
CD Molecular

**Samples tested:**  
Serum, plasma

**Tests:**  
1 X 96 well plate

**Sensitivity:**  
5 pg/mL

**Range:**  
31.25–2000 pg/mL

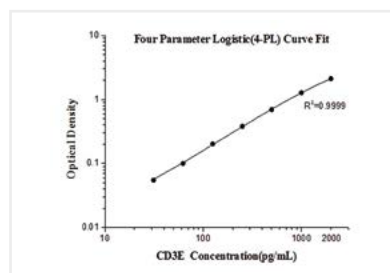
**Reactivity:**  
Human

**Entrez GeneID:**  
916

### Recovery:

Sample Type	Average	Range
Plasma	94%	82%–107%

### Standard Curve



## CEACAM5

**Catalog Number**  
**KE00042**

**Category:**  
CD Molecular

**Samples tested:**  
Serum, plasma

**Tests:**  
1 X 96 well plate

**Sensitivity:**  
64 pg/mL

**Range:**  
125–8000 pg/mL

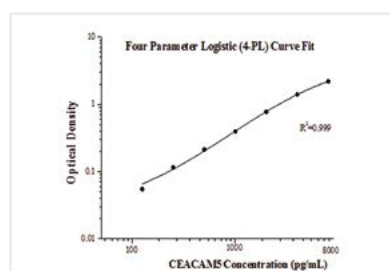
**Reactivity:**  
Human

**Entrez GeneID:**  
1048

### Recovery:

Sample Type	Average	Range
Plasma	94%	78%–119%

### Standard Curve



## PD1

### Catalog Number KE00075

Category:  
CD Molecular

Samples tested:  
Serum, plasma, cell culture  
supernatant, cell lysate

Tests:  
1 X 96 well plate

Sensitivity:  
43 pg/mL

Range:  
125–8000 pg/mL

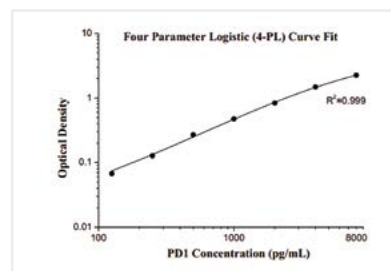
Reactivity:  
Human

Entrez GeneID:  
5133

#### Recovery:

Sample Type	Average	Range
Plasma	96%	80%–116%
Cell culture supernatant	95%	79%–120%
Cell lysate	101%	83%–125%

#### Standard Curve



## PD-L1

### Catalog Number KE00074

Category:  
CD Molecular

Samples tested:  
Serum, plasma, cell culture  
supernatant, cell lysate

Tests:  
1 X 96 well plate

Sensitivity:  
0.04 ng/mL

Range:  
0.156–10 ng/mL

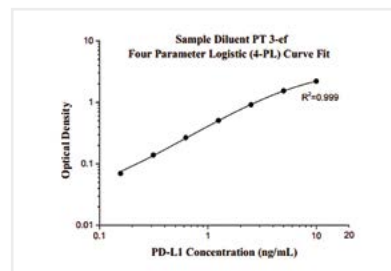
Reactivity:  
Human

Entrez GeneID:  
29126

#### Recovery:

Sample Type	Average	Range
Plasma	94%	74%–125%
Cell culture supernatant	105%	87%–127%
Cell lysate	100%	74%–126%

#### Standard Curve



## Adiponectin

### Catalog Number KE00080

Category:  
Cytokines

Samples tested:  
Serum, plasma,  
cell culture supernatant

Tests:  
1 X 96 well plate

Sensitivity:  
24 pg/mL

Range:  
62.5–4000 pg/mL

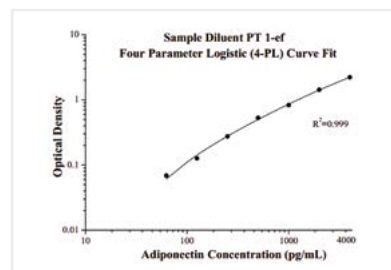
Reactivity:  
Human

Entrez GeneID:  
9370

#### Recovery:

Sample Type	Average	Range
Cell culture supernatant	100%	81%–115%

#### Standard Curve





## BIRC5

### Catalog Number KE00043

Category:  
Cytokines

Samples tested:  
Serum, plasma, cell culture supernatant, urine

Tests:  
1 X 96 well plate

Sensitivity:  
35 pg/mL

Range:  
62.5–4000 pg/mL

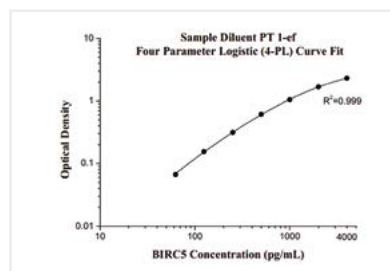
Reactivity:  
Human

Entrez GeneID:  
332

#### Recovery:

Sample Type	Average	Range
Plasma	97%	82%–125%
Cell culture supernatant	109%	91%–125%
Urine	100%	80%–119%

#### Standard Curve



## CCL4

### Catalog Number KE00062

Category:  
Cytokines

Samples tested:  
Serum, plasma, cell culture supernatant

Tests:  
1 X 96 well plate

Sensitivity:  
1 pg/mL

Range:  
7.8–500 pg/mL

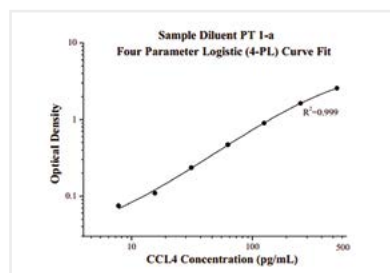
Reactivity:  
Human

Entrez GeneID:  
6351

#### Recovery:

Sample Type	Average	Range
Plasma	111%	100%–119%
Cell culture supernatant	101%	92%–113%

#### Standard Curve



## CHGA

### Catalog Number KE00057

Category:  
Cytokines

Samples tested:  
Serum, plasma

Tests:  
1 X 96 well plate

Sensitivity:  
30 pg/mL

Range:  
125–8000 pg/mL

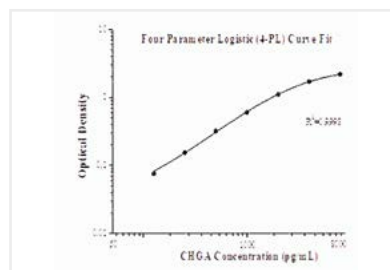
Reactivity:  
Human

Entrez GeneID:  
1113

#### Recovery:

Sample Type	Average	Range
Plasma	96%	83%–114%

#### Standard Curve





## F12

### Catalog Number KE00034

Category:  
Cytokines

Samples tested:  
Serum, plasma

Tests:  
1 X 96 well plate

Sensitivity:  
0.49 ng/mL

Range:  
0.5–32 ng/mL

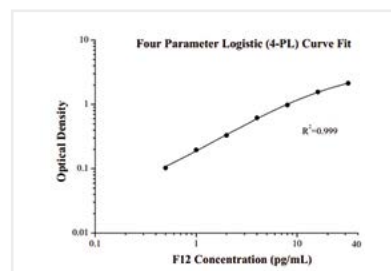
Reactivity:  
Human

Entrez GeneID:  
2161

#### Recovery:

Sample Type	Average	Range
Plasma	94%	73%–124%

#### Standard Curve



## FGF12

### Catalog Number KE00036

Category:  
Cytokines

Samples tested:  
Serum, plasma,  
cell culture supernatant

Tests:  
1 X 96 well plate

Sensitivity:  
0.015 ng/mL

Range:  
0.5–32 ng/mL

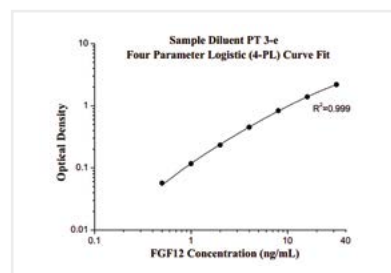
Reactivity:  
Human

Entrez GeneID:  
2257

#### Recovery:

Sample Type	Average	Range
Plasma	91%	72%–125%
Cell culture supernatant	102%	82%–120%

#### Standard Curve



## FN1

### Catalog Number KE00039

Category:  
Cytokines

Samples tested:  
Serum, plasma

Tests:  
1 X 96 well plate

Sensitivity:  
0.04 ng/mL

Range:  
125–8000 pg/mL

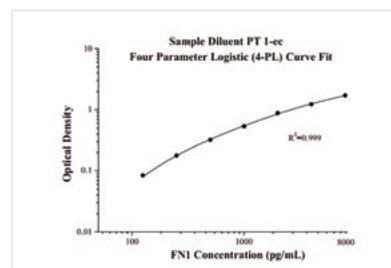
Reactivity:  
Human

Entrez GeneID:  
2335

#### Recovery:

Sample Type	Average	Range
Plasma	101%	73%–122%

#### Standard Curve



## GM-CSF

**Catalog Number**  
**KE00003**

**Category:**  
Cytokines

**Samples tested:**  
Serum, plasma,  
cell culture supernatant

**Tests:**  
1 X 96 well plate

**Sensitivity:**  
1 pg/mL

**Range:**  
7.8–250 pg/mL

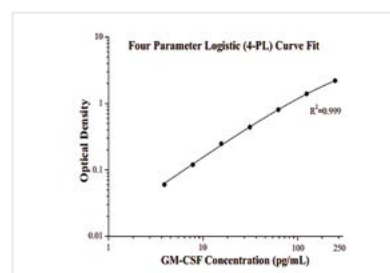
**Reactivity:**  
Human

**Entrez GeneID:**  
1437

### Recovery:

Sample Type	Average	Range
Plasma	93%	80%–109%
Cell culture supernatant	89%	77%–107%

### Standard Curve



## GKN1

**Catalog Number**  
**KE00029**

**Category:**  
Cytokines

**Samples tested:**  
Serum, plasma

**Tests:**  
1 X 96 well plate

**Sensitivity:**  
5 pg/mL

**Range:**  
31.25–2000 pg/mL

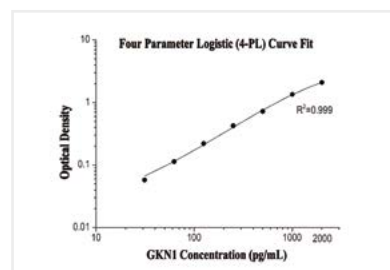
**Reactivity:**  
Human

**Entrez GeneID:**  
56287

### Recovery:

Sample Type	Average	Range
Plasma	95%	85%–121%

### Standard Curve



## GMFB

**Catalog Number**  
**KE00001**

**Category:**  
Cytokines

**Samples tested:**  
Serum, plasma,  
cell culture supernatant

**Tests:**  
1 X 96 well plate

**Sensitivity:**  
24 pg/mL

**Range:**  
125–8000 pg/mL

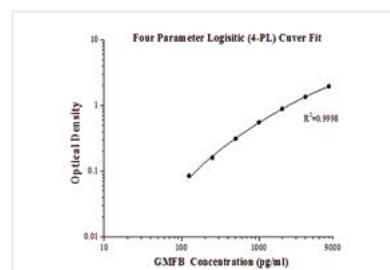
**Reactivity:**  
Human

**Entrez GeneID:**  
2764

### Recovery:

Sample Type	Average	Range
Plasma	87%	75%–102%
Cell culture supernatant	91%	83%–99%

### Standard Curve



## IFNA1

**Catalog Number**  
**KE00044**

**Category:**  
Cytokines

**Samples tested:**  
Serum, plasma

**Tests:**  
1 X 96 well plate

**Sensitivity:**  
1.5 pg/mL

**Range:**  
15.6–1000 pg/mL

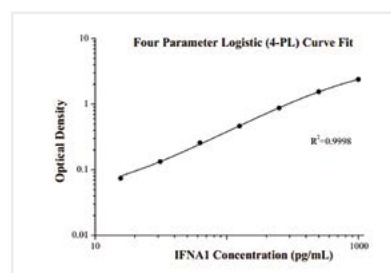
**Reactivity:**  
Human

**Entrez GeneID:**  
3439

### Recovery:

Sample Type	Average	Range
Plasma	102%	78%–121%

### Standard Curve



## IFN-gamma

**Catalog Number**  
**KE00063**

**Category:**  
Cytokines

**Samples tested:**  
Serum, plasma,  
cell culture supernatant

**Tests:**  
1 X 96 well plate

**Sensitivity:**  
1 pg/mL

**Range:**  
15.6–1000 pg/mL

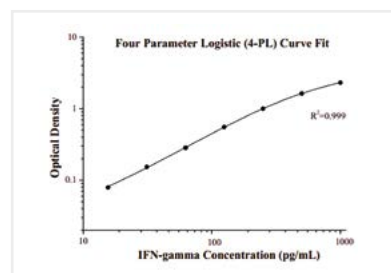
**Reactivity:**  
Human

**Entrez GeneID:**  
3458

### Recovery:

Sample Type	Average	Range
Plasma	95%	86%–102%
Cell culture supernatant	111%	84%–121%

### Standard Curve



## IL 1-beta

**Catalog Number**  
**KE10003**

**Category:**  
Cytokines

**Samples tested:**  
Serum, plasma, cell culture  
supernatant, cell lysate

**Tests:**  
1 X 96 well plate

**Sensitivity:**  
1 pg/mL

**Range:**  
7.8–500 pg/mL

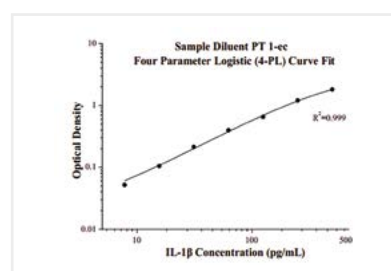
**Reactivity:**  
Mouse

**Entrez GeneID:**  
16176

### Recovery:

Sample Type	Average	Range
Plasma	102%	91%–123%
Cell culture supernatant	113%	89%–126%
Cell lysate	104%	82%–128%

### Standard Curve



## IL2

### Catalog Number KE10004

Category:  
Cytokines

Samples tested:  
Serum, plasma,  
cell culture supernatant

Tests:  
1 X 96 well plate

Sensitivity:  
0.5 pg/mL

Range:  
15.6–1000 pg/mL

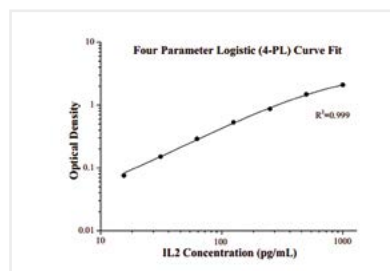
Reactivity:  
Mouse

Entrez GeneID:  
16183

#### Recovery:

Sample Type	Average	Range
Serum	111%	99%–120%
Cell culture supernatant	106%	94%–113%

#### Standard Curve



## MCP-1

### Catalog Number KE10006

Category:  
Cytokines

Samples tested:  
Serum, plasma,  
cell culture supernatant

Tests:  
1 X 96 well plate

Sensitivity:  
1.34 pg/mL

Range:  
3.13–200 pg/mL

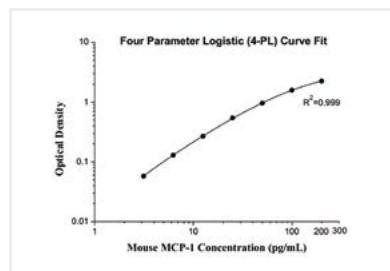
Reactivity:  
Mouse

Entrez GeneID:  
20296

#### Recovery:

Sample Type	Average	Range
Plasma	91%	76%–127%
Cell culture supernatant	102%	85%–119%

#### Standard Curve



## MMP-2

### Catalog Number KE00077

Category:  
Cytokines

Samples tested:  
Serum, plasma,  
cell culture supernatant

Tests:  
1 X 96 well plate

Sensitivity:  
0.05 ng/mL

Range:  
0.313–10 ng/mL

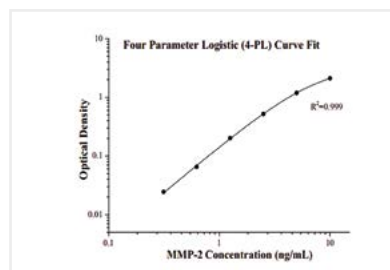
Reactivity:  
Human

Entrez GeneID:  
4313

#### Recovery:

Sample Type	Average	Range
Plasma	116%	104%–129%
Cell culture supernatant	101%	87%–115%

#### Standard Curve



## MMP-13

**Catalog Number**  
**KE00078**

**Category:**  
Cytokines

**Samples tested:**  
Serum, plasma,  
cell culture supernatant

**Tests:**  
1 X 96 well plate

**Sensitivity:**  
1.2 pg/mL

**Range:**  
93.8–6000 pg/mL

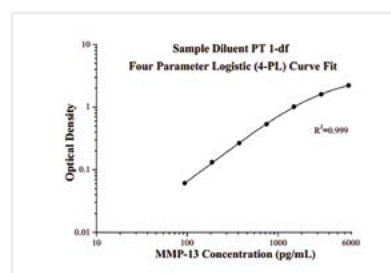
**Reactivity:**  
Human

**Entrez GeneID:**  
4322

### Recovery:

Sample Type	Average	Range
Plasma	90%	85%–100%
Cell culture supernatant	86%	79%–92%

### Standard Curve



## NCALD

**Catalog Number**  
**KE00028**

**Category:**  
Cytokines

**Samples tested:**  
Serum, plasma

**Tests:**  
1 X 96 well plate

**Sensitivity:**  
3 pg/mL

**Range:**  
31.25–2000 pg/mL

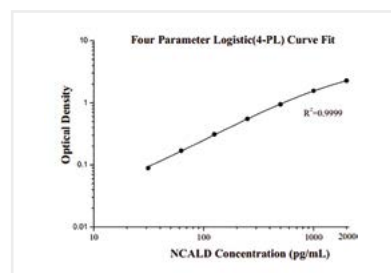
**Reactivity:**  
Human

**Entrez GeneID:**  
83988

### Recovery:

Sample Type	Average	Range
Plasma	105%	96%–125%

### Standard Curve



## SERPINA3

**Catalog Number**  
**KE00037**

**Category:**  
Cytokines

**Samples tested:**  
Serum, plasma

**Tests:**  
1 X 96 well plate

**Sensitivity:**  
0.8 ng/mL

**Range:**  
1–64 ng/mL

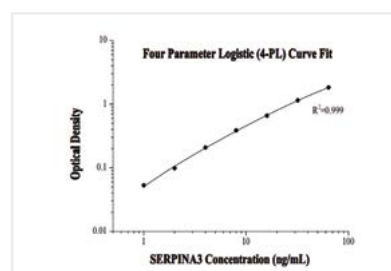
**Reactivity:**  
Human

**Entrez GeneID:**  
12

### Recovery:

Sample Type	Average	Range
Plasma	99%	82%–113%

### Standard Curve



## TGF-beta1

**Catalog Number**  
**KE00002**

**Category:**  
Cytokines

**Samples tested:**  
Serum, plasma,  
cell culture supernatant

**Tests:**  
1 X 96 well plate

**Sensitivity:**  
3.3 pg/mL

**Range:**  
15.6–1000 pg/mL

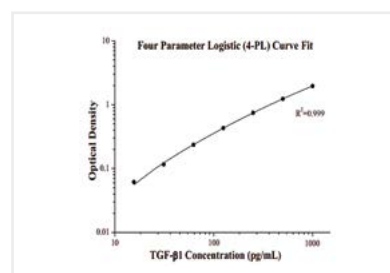
**Reactivity:**  
Human

**Entrez GeneID:**  
7040

### Recovery:

Sample Type	Average	Range
Plasma	100%	81%–111%
Cell culture supernatant	105%	93%–115%
Urine	93%	86%–101%

### Standard Curve



## TGF-beta1

**Catalog Number**  
**KE10005**

**Category:**  
Cytokines

**Samples tested:**  
Serum, plasma,  
cell culture supernatant

**Tests:**  
1 X 96 well plate

**Sensitivity:**  
16 pg/mL

**Range:**  
31.25–2000 pg/mL

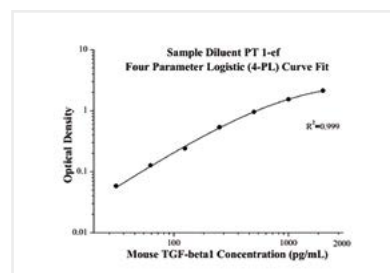
**Reactivity:**  
Mouse

**Entrez GeneID:**  
21803

### Recovery:

Sample Type	Average	Range
Plasma	85%	74%–101%
Cell culture supernatant	91%	80%–102%

### Standard Curve



## TLE3

**Catalog Number**  
**KE00048**

**Category:**  
Cytokines

**Samples tested:**  
Serum, plasma, cell culture  
supernatant, urine

**Tests:**  
1 X 96 well plate

**Sensitivity:**  
11 pg/mL

**Range:**  
62.5–4000 pg/mL

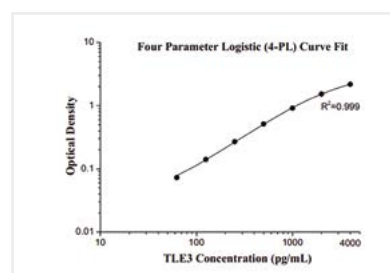
**Reactivity:**  
Human

**Entrez GeneID:**  
7090

### Recovery:

Sample Type	Average	Range
Plasma	97%	82%–126%
Cell culture supernatant	106%	83%–127%
Urine	90%	78%–131%

### Standard Curve



## TNF-alpha

**Catalog Number**  
**KE10002**

**Category:**  
Cytokines

**Samples tested:**  
Serum, plasma,  
cell culture supernatant

**Tests:**  
1 X 96 well plate

**Sensitivity:**  
1 pg/mL

**Range:**  
7.8–500 pg/mL

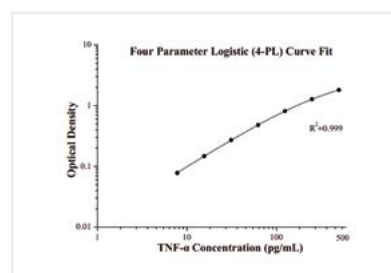
**Reactivity:**  
Mouse

**Entrez GeneID:**  
21926

### Recovery:

Sample Type	Average	Range
Cell culture supernatant	94%	85%–104%

### Standard Curve



## IL2

**Catalog Number**  
**KE00017**

**Category:**  
Interleukin

**Samples tested:**  
Serum, plasma,  
cell culture supernatant

**Tests:**  
1 X 96 well plate

**Sensitivity:**  
3.6 pg/mL

**Range:**  
15.6–1000 pg/mL

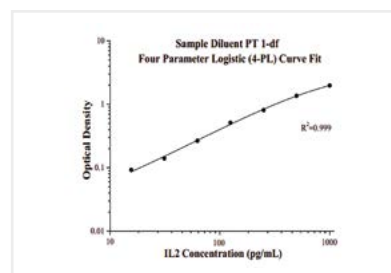
**Reactivity:**  
Human

**Entrez GeneID:**  
3558

### Recovery:

Sample Type	Average	Range
Plasma	92%	81%–107%
Cell culture supernatant	112%	103%–121%

### Standard Curve



OVER 70 KITS ARE AVAILABLE  
TO BUY ONLINE FOR €475\* EACH.

All kits are in stock now for next day shipping.

Visit [ptglab.com](http://ptglab.com) for more information.

**The Benchmark**  
In Antibodies

\*Priced at £399 each in the United Kingdom.



# THE BENCHMARK IN ANTIBODIES

Since the day it was founded, Proteintech has been making all of its products to the highest standards possible whilst taking complete responsibility for the quality of each product.

- Proteintech makes every single antibody in its 12,000+ catalog.
- Each Proteintech product is unique and cannot be bought under a different label.
- Antibodies are tested with siRNA treated samples to demonstrate specificity.
- It works in every single species and application or get a full money-back refund.

**Proteintech has over 12,000 antibodies in its extensive catalog, all fully validated and available for next day delivery.**



**proteintech™**

Antibodies | ELISA kits | Proteins

[www.ptglab.com](http://www.ptglab.com)

## IL4

### Catalog Number KE00016

**Category:**  
Interleukin

**Samples tested:**  
Serum, plasma,  
cell culture supernatant

**Tests:**  
1 X 96 well plate

**Sensitivity:**  
2.5 pg/mL

**Range:**  
31.25–2000 pg/mL

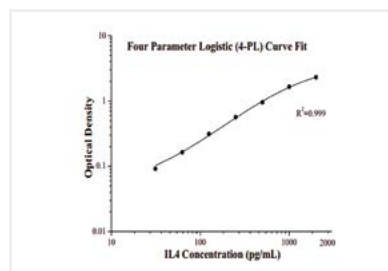
**Reactivity:**  
Human

**Entrez GeneID:**  
3565

#### Recovery:

Sample Type	Average	Range
Plasma	103%	86%–116%
Cell culture supernatant	95%	83%–105%

#### Standard Curve



## IL5

### Catalog Number KE00010

**Category:**  
Interleukin

**Samples tested:**  
Serum, plasma, cell culture  
supernatant, urine

**Tests:**  
1 X 96 well plate

**Sensitivity:**  
30 pg/mL

**Range:**  
31.25–2000 pg/mL

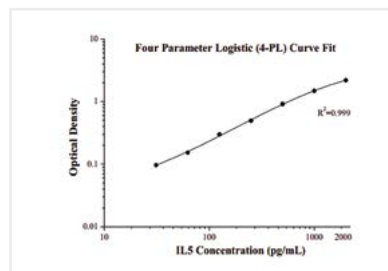
**Reactivity:**  
Human

**Entrez GeneID:**  
3567

#### Recovery:

Sample Type	Average	Range
Plasma	97%	87%–116%
Cell culture supernatant	102%	91%–116%
Urine	98%	82%–123%

#### Standard Curve



## IL6

### Catalog Number KE00007

**Category:**  
Interleukin

**Samples tested:**  
Serum, plasma, cell culture  
supernatant, urine

**Tests:**  
1 X 96 well plate

**Sensitivity:**  
1.4 pg/mL

**Range:**  
15.6–1000 pg/mL

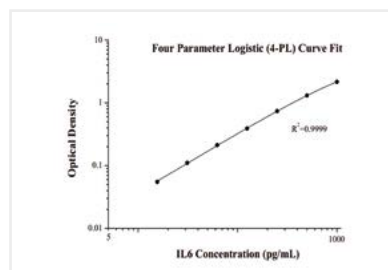
**Reactivity:**  
Human

**Entrez GeneID:**  
3569

#### Recovery:

Sample Type	Average	Range
Plasma	92%	78%–122%
Cell culture supernatant	102%	99%–114%
Urine	99%	80%–116%

#### Standard Curve



## IL8

### Catalog Number KE00006

Category:  
Interleukin

Samples tested:  
Serum, plasma,  
cell culture supernatant

Tests:  
1 X 96 well plate

Sensitivity:  
12.1 pg/mL

Range:  
15.6–1000 pg/mL

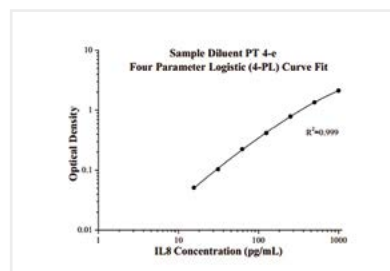
Reactivity:  
Human

Entrez GeneID:  
3576

#### Recovery:

Sample Type	Average	Range
Plasma	100%	80%–127%
Cell culture supernatant	101%	87%–114%

#### Standard Curve



## IL10

### Catalog Number KE00012

Category:  
Interleukin

Samples tested:  
Serum, plasma,  
cell culture supernatant,

Tests:  
1 X 96 well plate

Sensitivity:  
5.3 pg/mL

Range:  
62.5–4000 pg/mL

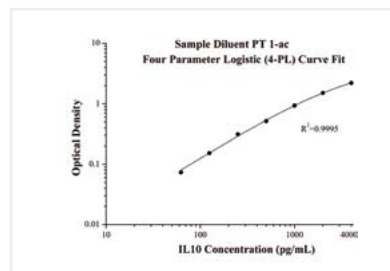
Reactivity:  
Human

Entrez GeneID:  
3586

#### Recovery:

Sample Type	Average	Range
Plasma	100%	86%–127%
Cell culture supernatant	101%	88%–114%

#### Standard Curve



## IL12 p40

### Catalog Number KE00018

Category:  
Interleukin

Samples tested:  
Cell culture supernatant

Tests:  
1 X 96 well plate

Sensitivity:  
3.4 pg/mL

Range:  
31.25–2000 pg/mL

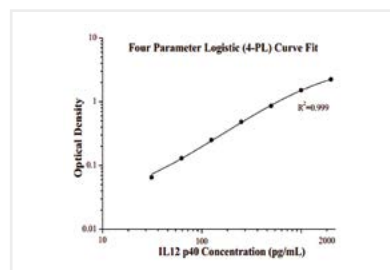
Reactivity:  
Human

Entrez GeneID:  
3593

#### Recovery:

Sample Type	Average	Range
Cell culture supernatant	95%	80%–103%

#### Standard Curve



## IL12 p70

### Catalog Number KE00019

**Category:**

Interleukin

**Samples tested:**

Serum, plasma, cell culture supernatant, urine

**Tests:**

1 X 96 well plate

**Sensitivity:**

8.5 pg/mL

**Range:**

31.25–2000 pg/mL

**Reactivity:**

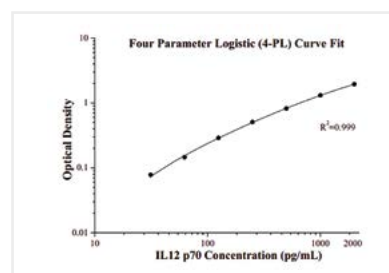
Human

**Entrez GeneID:**

3592/3593

**Recovery:**

Sample Type	Average	Range
Plasma	105%	91%–124%
Cell culture supernatant	102%	96%–112%
Urine	81%	70%–89%

**Standard Curve**


## IL13

### Catalog Number KE00020

**Category:**

Interleukin

**Samples tested:**

Serum, plasma, cell culture supernatant

**Tests:**

1 X 96 well plate

**Sensitivity:**

1 pg/mL

**Range:**

62.5–4000 pg/mL

**Reactivity:**

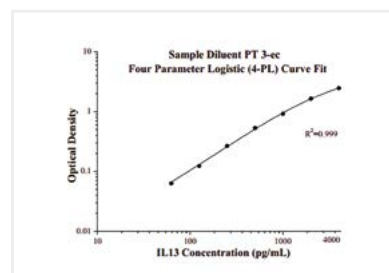
Human

**Entrez GeneID:**

3596

**Recovery:**

Sample Type	Average	Range
Plasma	88%	81%–95%
Cell culture supernatant	84%	73%–96%

**Standard Curve**


## IL17A

### Catalog Number KE00015

**Category:**

Interleukin

**Samples tested:**

Serum, plasma

**Tests:**

1 X 96 well plate

**Sensitivity:**

48 pg/mL

**Range:**

62.5–4000 pg/mL

**Reactivity:**

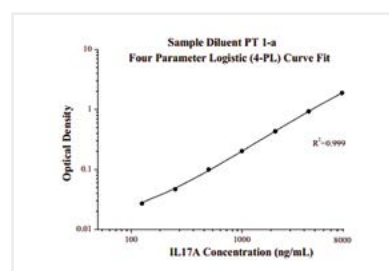
Human

**Entrez GeneID:**

3605

**Recovery:**

Sample Type	Average	Range
Plasma	96%	78%–120%
Cell culture supernatant	92%	83%–108%

**Standard Curve**


## IL28A

**Catalog Number**  
**KE00011**

**Category:**  
Interleukin

**Samples tested:**  
Serum, plasma, cell culture supernatant, urine

**Tests:**  
1 X 96 well plate

**Sensitivity:**  
1 pg/mL

**Range:**  
7.8–500 pg/mL

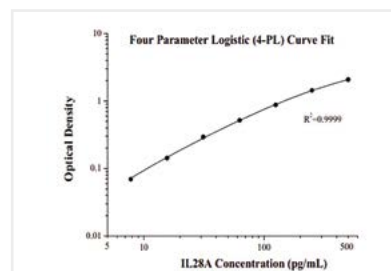
**Reactivity:**  
Human

**Entrez GeneID:**  
282616

### Recovery:

Sample Type	Average	Range
Plasma	95%	87%–102%
Cell culture supernatant	101%	88%–109%
Urine	100%	89%–109%

### Standard Curve



## PRE-IL18

**Catalog Number**  
**KE00025**

**Category:**  
Interleukin

**Samples tested:**  
Serum, plasma

**Tests:**  
1 X 96 well plate

**Sensitivity:**  
1.5 pg/mL

**Range:**  
15.6–1000 pg/mL

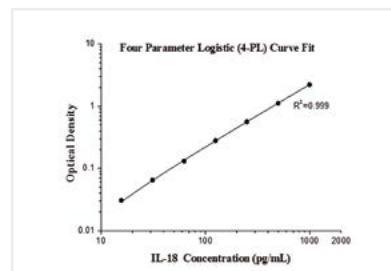
**Reactivity:**  
Human

**Entrez GeneID:**  
3606

### Recovery:

Sample Type	Average	Range
Plasma	87%	77%–100%

### Standard Curve



## ABCD1

**Catalog Number**  
**KE00030**

**Category:**  
Membrane Protein

**Samples tested:**  
Serum, plasma

**Tests:**  
1 X 96 well plate

**Sensitivity:**  
6 pg/mL

**Range:**  
31.25–2000 pg/mL

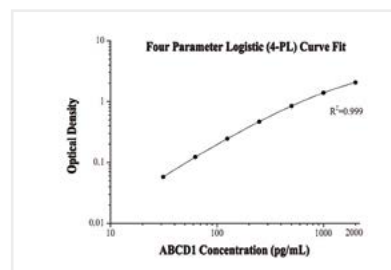
**Reactivity:**  
Human

**Entrez GeneID:**  
215

### Recovery:

Sample Type	Average	Range
Plasma	95%	85%–118%

### Standard Curve



## ADAM12

**Catalog Number**  
**KE00058**

**Category:**

Membrane Protein

**Samples tested:**

Serum, plasma, cell culture supernatant, urine

**Tests:**

1 X 96 well plate

**Sensitivity:**

0.63 ng/mL

**Range:**

0.78–50 ng/mL

**Reactivity:**

Human

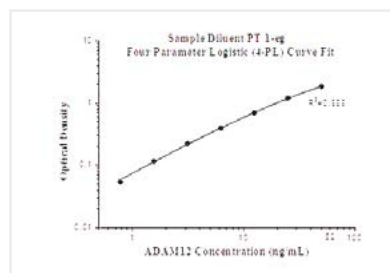
**Entrez GeneID:**

8038

**Recovery:**

Sample Type	Average	Range
Plasma	94%	76%–128%
Cell culture supernatant	98%	81%–116%
Urine	102%	75%–123%

**Standard Curve**



## APOL1

**Catalog Number**  
**KE00047**

**Category:**

Membrane Protein

**Samples tested:**

Serum, plasma

**Tests:**

1 X 96 well plate

**Sensitivity:**

0.07 ng/mL

**Range:**

0.156–10 ng/mL

**Reactivity:**

Human

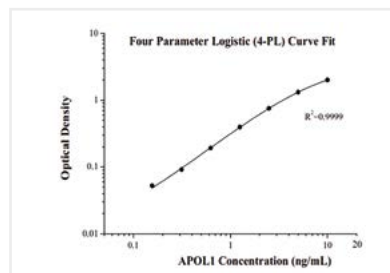
**Entrez GeneID:**

8542

**Recovery:**

Sample Type	Average	Range
Plasma	94%	87%–107%

**Standard Curve**



## CD13

**Catalog Number**  
**KE00083**

**Category:**

Membrane Protein

**Samples tested:**

Serum, plasma, cell culture supernatant

**Tests:**

1 X 96 well plate

**Sensitivity:**

0.06 ng/mL

**Range:**

0.313–20 ng/mL

**Reactivity:**

Human

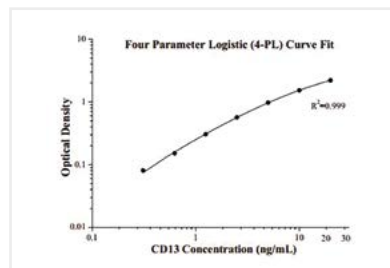
**Entrez GeneID:**

290

**Recovery:**

Sample Type	Average	Range
Plasma	91%	79%–105%
Cell culture supernatant	106%	83%–127%

**Standard Curve**





## CD71

**Catalog Number**  
**KE00081**

**Category:**  
Membrane Protein

**Samples tested:**  
Serum, plasma

**Tests:**  
1 X 96 well plate

**Sensitivity:**  
0.2 ng/mL

**Range:**  
1.56–100 ng/mL

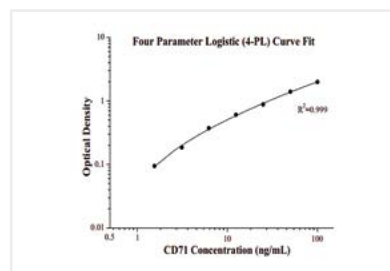
**Reactivity:**  
Human

**Entrez GeneID:**  
7037

### Recovery:

Sample Type	Average	Range
Plasma	92%	83%–101%

### Standard Curve



## CNPY2

**Catalog Number**  
**KE00073**

**Category:**  
Membrane Protein

**Samples tested:**  
Serum, plasma, cell lysate

**Tests:**  
1 X 96 well plate

**Sensitivity:**  
1.5 pg/mL

**Range:**  
0.156–10 ng/mL

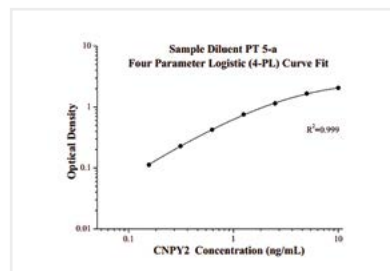
**Reactivity:**  
Human

**Entrez GeneID:**  
10330

### Recovery:

Sample Type	Average	Range
Plasma	96%	85%–114%
Cell culture supernatant	88%	80%–95%

### Standard Curve



## CYCS

**Catalog Number**  
**KE00079**

**Category:**  
Membrane Protein

**Samples tested:**  
Cell lysate

**Tests:**  
1 X 96 well plate

**Sensitivity:**  
7 ng/mL

**Range:**  
78.1–5000 pg/mL

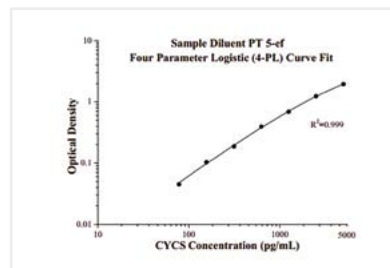
**Reactivity:**  
Human

**Entrez GeneID:**  
54205

### Recovery:

Sample Type	Average	Range
Cell lysate	96%	74%–126%

### Standard Curve



## HSPD1

**Catalog Number**  
**KE00032**

**Category:**  
Membrane Protein

**Samples tested:**  
Serum, plasma

**Tests:**  
1 X 96 well plate

**Sensitivity:**  
7 pg/mL

**Range:**  
31.25–2000 pg/mL

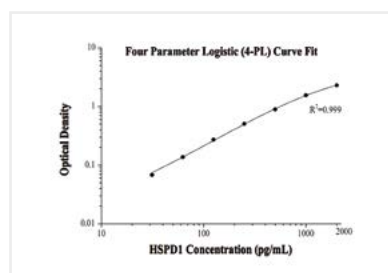
**Reactivity:**  
Human

**Entrez GeneID:**  
3329

### Recovery:

Sample Type	Average	Range
Plasma	99%	86%–119%

### Standard Curve



## MHC Class I

**Catalog Number**  
**KE00035**

**Category:**  
Membrane Protein

**Samples tested:**  
Serum, plasma

**Tests:**  
1 X 96 well plate

**Sensitivity:**  
19.6 pg/mL

**Range:**  
125–4000 pg/mL

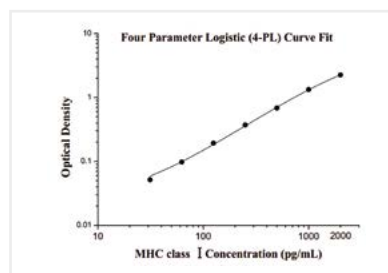
**Reactivity:**  
Human

**Entrez GeneID:**  
3105

### Recovery:

Sample Type	Average	Range
Plasma	103%	85%–122%

### Standard Curve



## NINJ2

**Catalog Number**  
**KE00038**

**Category:**  
Membrane Protein

**Samples tested:**  
Serum, plasma

**Tests:**  
1 X 96 well plate

**Sensitivity:**  
0.1 ng/mL

**Range:**  
0.313–20 ng/mL

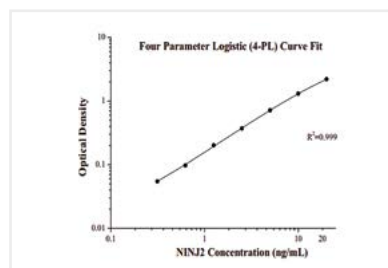
**Reactivity:**  
Human

**Entrez GeneID:**  
4815

### Recovery:

Sample Type	Average	Range
Plasma	86%	72%–102%

### Standard Curve



## TNF-alpha

**Catalog Number**  
**KE00068**

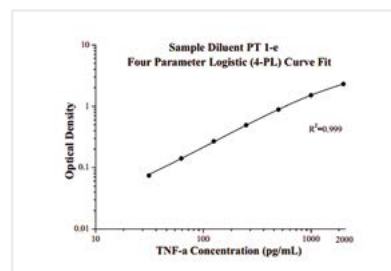
**Category:**  
Membrane Protein  
**Samples tested:**  
Cell culture supernatant

**Tests:**  
1 X 96 well plate  
**Sensitivity:**  
1 pg/mL  
**Range:**  
31.25–2000 pg/mL  
**Reactivity:**  
Human  
**Entrez GeneID:**  
7124

### Recovery:

Sample Type	Average	Range
Plasma	77%	70%–86%
Cell culture supernatant	100%	81%–126%

### Standard Curve



## Albumin

**Catalog Number**  
**KE00076**

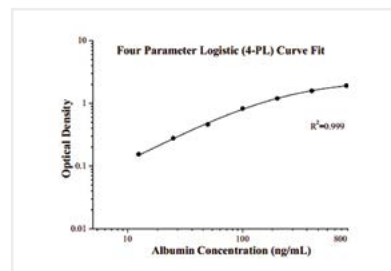
**Category:**  
Other  
**Samples tested:**  
Serum, plasma, urine

**Tests:**  
1 X 96 well plate  
**Sensitivity:**  
0.17 ng/mL  
**Range:**  
12.5–800 ng/mL  
**Reactivity:**  
Human  
**Entrez GeneID:**  
213

### Recovery:

Sample Type	Average	Range
Plasma	85%	76%–96%
Urine	100%	93%–109%

### Standard Curve



## APOD

**Catalog Number**  
**KE00067**

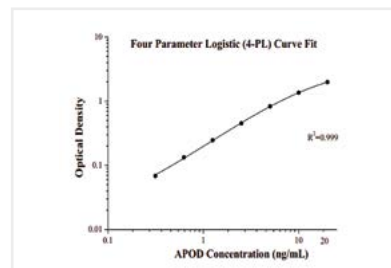
**Category:**  
Other  
**Samples tested:**  
Serum, plasma

**Tests:**  
1 X 96 well plate  
**Sensitivity:**  
0.01 ng/mL  
**Range:**  
0.313–20 ng/mL  
**Reactivity:**  
Human  
**Entrez GeneID:**  
347

### Recovery:

Sample Type	Average	Range
Plasma	92%	76%–102%

### Standard Curve



## CYB5R3

**Catalog Number**  
**KE00069**

**Category:**  
Other

**Samples tested:**  
Serum, plasma, cell lysate

**Tests:**  
1 X 96 well plate

**Sensitivity:**  
3.5 pg/mL

**Range:**  
31.25–2000 pg/mL

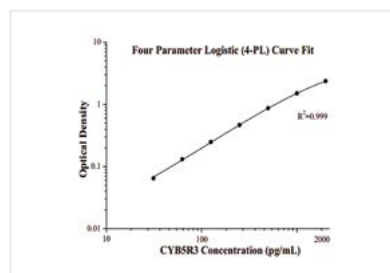
**Reactivity:**  
Human

**Entrez GeneID:**  
1727

### Recovery:

Sample Type	Average	Range
Plasma	107%	98%–119%
Cell lysate	109%	94%–118%

### Standard Curve



## FKBP1

**Catalog Number**  
**KE00023**

**Category:**  
Other

**Samples tested:**  
Serum, plasma

**Tests:**  
1 X 96 well plate

**Sensitivity:**  
7 pg/mL

**Range:**  
31.25–2000 pg/mL

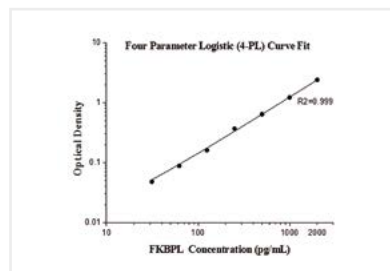
**Reactivity:**  
Human

**Entrez GeneID:**  
63943

### Recovery:

Sample Type	Average	Range
Plasma	99%	87%–115%

### Standard Curve



## HDAC1

**Catalog Number**  
**KE00033**

**Category:**  
Other

**Samples tested:**  
Serum, plasma

**Tests:**  
1 X 96 well plate

**Sensitivity:**  
11 pg/mL

**Range:**  
62.5–4000 pg/mL

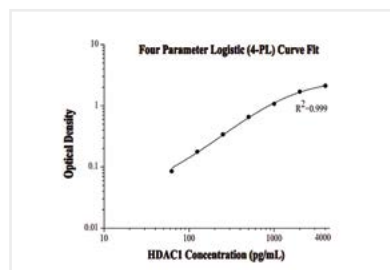
**Reactivity:**  
Human

**Entrez GeneID:**  
3065

### Recovery:

Sample Type	Average	Range
Plasma	100%	86%–127%

### Standard Curve



## HSP70

**Catalog Number**  
**KE00059**

**Category:**  
Other

**Samples tested:**  
Serum, plasma, cell culture supernatant, urine

**Tests:**  
1 X 96 well plate

**Sensitivity:**  
1 pg/mL

**Range:**  
31.25–2000 pg/mL

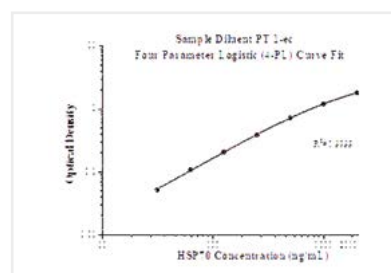
**Reactivity:**  
Human

**Entrez GeneID:**  
3303

### Recovery:

Sample Type	Average	Range
Plasma	104%	92%–124%
Cell culture supernatant	97%	80%–123%
Urine	86%	76%–98%

### Standard Curve



## HSP90

**Catalog Number**  
**KE00054**

**Category:**  
Other

**Samples tested:**  
Serum, plasma, cell culture supernatant, urine

**Tests:**  
1 X 96 well plate

**Sensitivity:**  
90 pg/mL

**Range:**  
125–8000 pg/mL

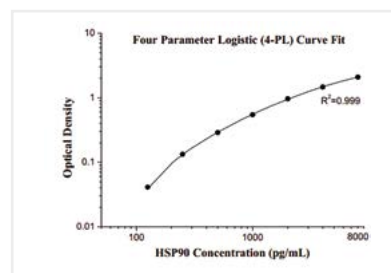
**Reactivity:**  
Human

**Entrez GeneID:**  
3320

### Recovery:

Sample Type	Average	Range
Plasma	100%	82%–119%
Cell culture supernatant	108%	92%–126%
Cell lysate	106%	81%–124%

### Standard Curve



## IDH1

**Catalog Number**  
**KE00060**

**Category:**  
Other

**Samples tested:**  
Serum, plasma, cell lysate

**Tests:**  
1 X 96 well plate

**Sensitivity:**  
3.3 pg/mL

**Range:**  
62.5–4000 pg/mL

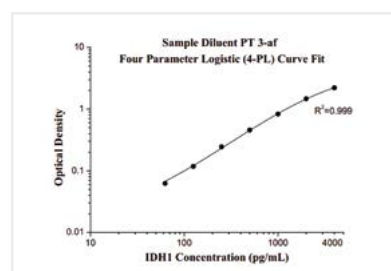
**Reactivity:**  
Human

**Entrez GeneID:**  
3417

### Recovery:

Sample Type	Average	Range
Plasma	98%	77%–125%
Cell lysate	96%	76%–128%

### Standard Curve



## JNK

**Catalog Number**  
**KE00072**

**Category:**  
Other

**Samples tested:**  
Cell lysate

**Tests:**  
1 X 96 well plate

**Sensitivity:**  
0.1 ng/mL

**Range:**  
1.56–100 ng/mL

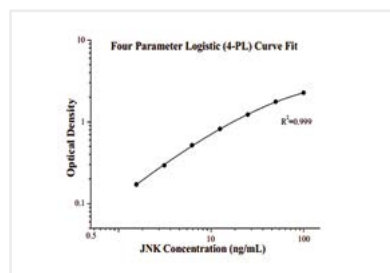
**Reactivity:**  
Human

**Entrez GeneID:**  
5599

### Recovery:

Sample Type	Average	Range
Cell lysate	100%	85%–110%

### Standard Curve



## MammaglobinA

**Catalog Number**  
**KE00071**

**Category:**  
Other

**Samples tested:**  
Serum, plasma, cell culture supernatant, urine

**Tests:**  
1 X 96 well plate

**Sensitivity:**  
5 pg/mL

**Range:**  
125–8000 pg/mL

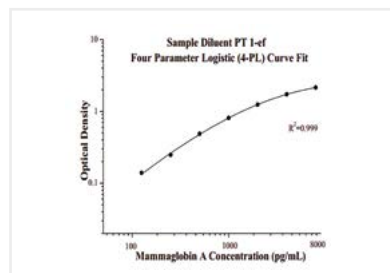
**Reactivity:**  
Human

**Entrez GeneID:**  
4250

### Recovery:

Sample Type	Average	Range
Plasma	103%	92%–111%
Cell culture supernatant	104%	86%–125%
Urine	94%	85%–113%

### Standard Curve



## P21

**Catalog Number**  
**KE00049**

**Category:**  
Other

**Samples tested:**  
Cell lysate

**Tests:**  
1 X 96 well plate

**Sensitivity:**  
0.1 ng/mL

**Range:**  
0.25–16 ng/mL

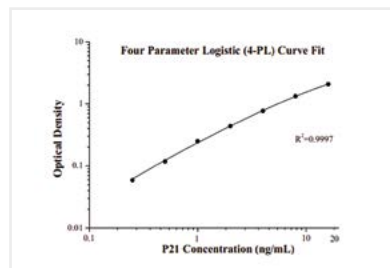
**Reactivity:**  
Human

**Entrez GeneID:**  
1026

### Recovery:

Sample Type	Average	Range
Cell lysate	87%	81%–97%

### Standard Curve



## SMN2

**Catalog Number**  
**KE00027**

**Category:**  
Other

**Samples tested:**  
Tissue lysate, cell lysate

**Tests:**  
1 X 96 well plate

**Sensitivity:**  
6 pg/mL

**Range:**  
62.5–4000 pg/mL

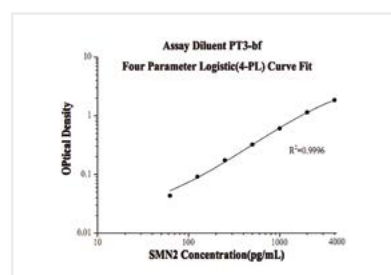
**Reactivity:**  
Human

**Entrez GeneID:**  
6607

### Recovery:

Sample Type	Average	Range
Cell lysate	133%	106%–121%
Tissue lysate	90%	90%–91%

### Standard Curve



## TDP-43

**Catalog Number**  
**KE00005**

**Category:**  
Other

**Samples tested:**  
Serum, plasma

**Tests:**  
1 X 96 well plate

**Sensitivity:**  
40 pg/mL

**Range:**  
62.5–2000 pg/mL

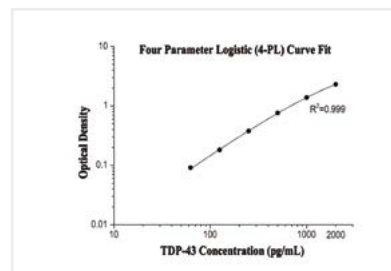
**Reactivity:**  
Human

**Entrez GeneID:**  
23435

### Recovery:

Sample Type	Average	Range
Plasma	93%	80%–118%

### Standard Curve



# VISIT PTGLAB.COM FOR THE FULL CATALOG OF PROTEINTECH PRODUCTS

- Premade polyclonal antibodies
- Premade monoclonal antibodies
- Secondary antibodies
- HRP-Conjugated antibodies
- ELISA kits
- Fusion proteins



# CONTACT US

## Proteintech Group *US Head Office*

<b>PHONE</b>	1 (888) 4PTGLAB (1-888-478-4522) (toll free in USA), or 1(312) 455-8498 (outside USA)
<b>FAX</b>	1 (312) 455-8408
<b>ADDRESS</b>	Proteintech Group, Inc. 5400 Pearl Street, Suite 300, Rosemont, IL 60018, USA
<b>EMAIL</b>	proteintech@ptglab.com

## Proteintech Europe *United Kingdom*

<b>PHONE</b>	+44 (161) 8393007
<b>FAX</b>	+44 (161) 2321272
<b>ADDRESS</b>	Proteintech Europe, Ltd. 4th Floor, 196 Deansgate, Manchester, M3 3WF
<b>EMAIL</b>	europe@ptglab.com

## Proteintech Europe *Germany*

<b>EMAIL</b>	germany@ptglab.com Sales and technical support only.
--------------	---

## Proteintech *China Office*

<b>PHONE</b>	027-87531629 or 4006-900-926
<b>FAX</b>	027-87531627
<b>ADDRESS</b>	Wuhan Sanying Biotechnologies D3-3, No.666 Gaoxin Avenue, Wuhan East Lake Hi-tech Development Zone Wuhan, Hubei, P.R.C
<b>EMAIL</b>	service@ptglab.com

## Support

Available 24 hours via Live Chat and 9-5 (CDT) via phone.

Email support also available.

**LIVE CHAT**  
[www.ptglab.com](http://www.ptglab.com)

**TWITTER**  
[@proteintech](https://twitter.com/proteintech)

**BLOG**  
[blog.ptglab.com](http://blog.ptglab.com)

**YOUTUBE**  
[www.youtube.com/Proteintech](http://www.youtube.com/Proteintech)



We are ISO 9001 and  
ISO 13485 accredited.



